

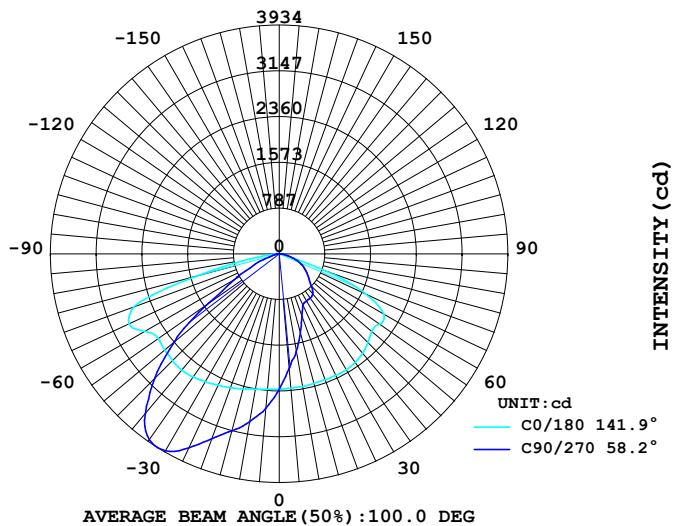
LUMINAIRE PHOTOMETRIC TEST REPORT

Report number:

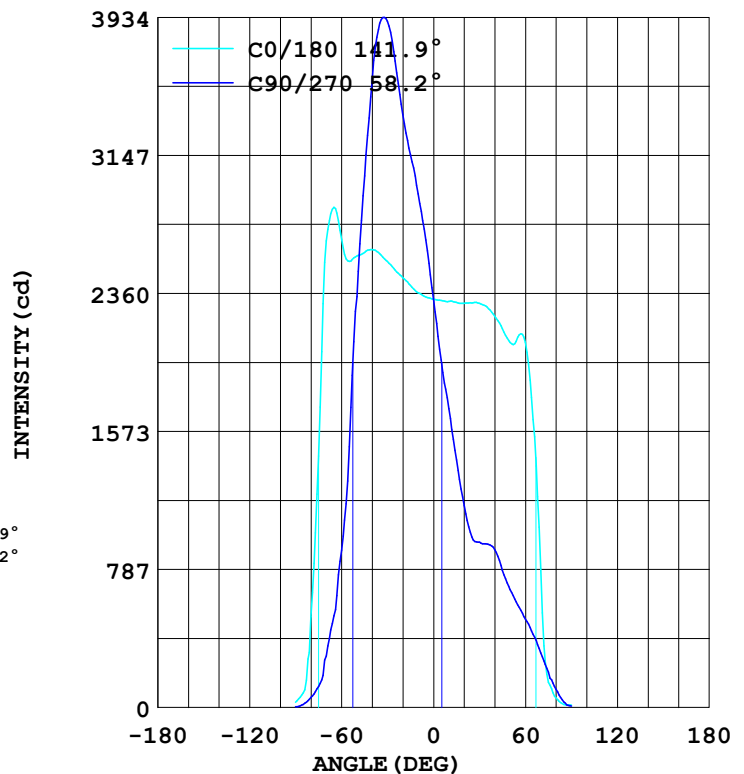
MANUFACTURER: ILUMEN GMBH	Address:	
NAME: Agnes D	TYPE: IL-PO29D-N0652C-T3B	WEIGHT:
SPECIFICATION: 5050LED、4000K、145*53DEG	DIMENSION:	SERIAL No.:

DATA OF LAMP		Imax(cd)	4900	S/MH (C0/180)	1.69
MODEL		EFFICIENCY (%)	100.0	S/MH (C90/270)	1.73
NOMINAL POWER(W)	66	TOTAL FLUX(lm)	9143.8	Voltage(V)	230.8
RATED VOLTAGE (V)	230	EFFICIENCY (lm/W)	140.2	Current(A)	0.290
NOMINAL FLUX(lm)	9143.8	η up (%)	0.0	Power(W)	65.22
LAMPS QUANTITY	1	η down (%)	100.0	Power Factor (PF)	0.971
TEST VOLTAGE (V)	230.9	Effective Flux(lm)	9143.8	EEI	0.107

LUMINOUS INTENSITY DISTRIBUTION



LUMINOUS INTENSITY DISTRIBUTION



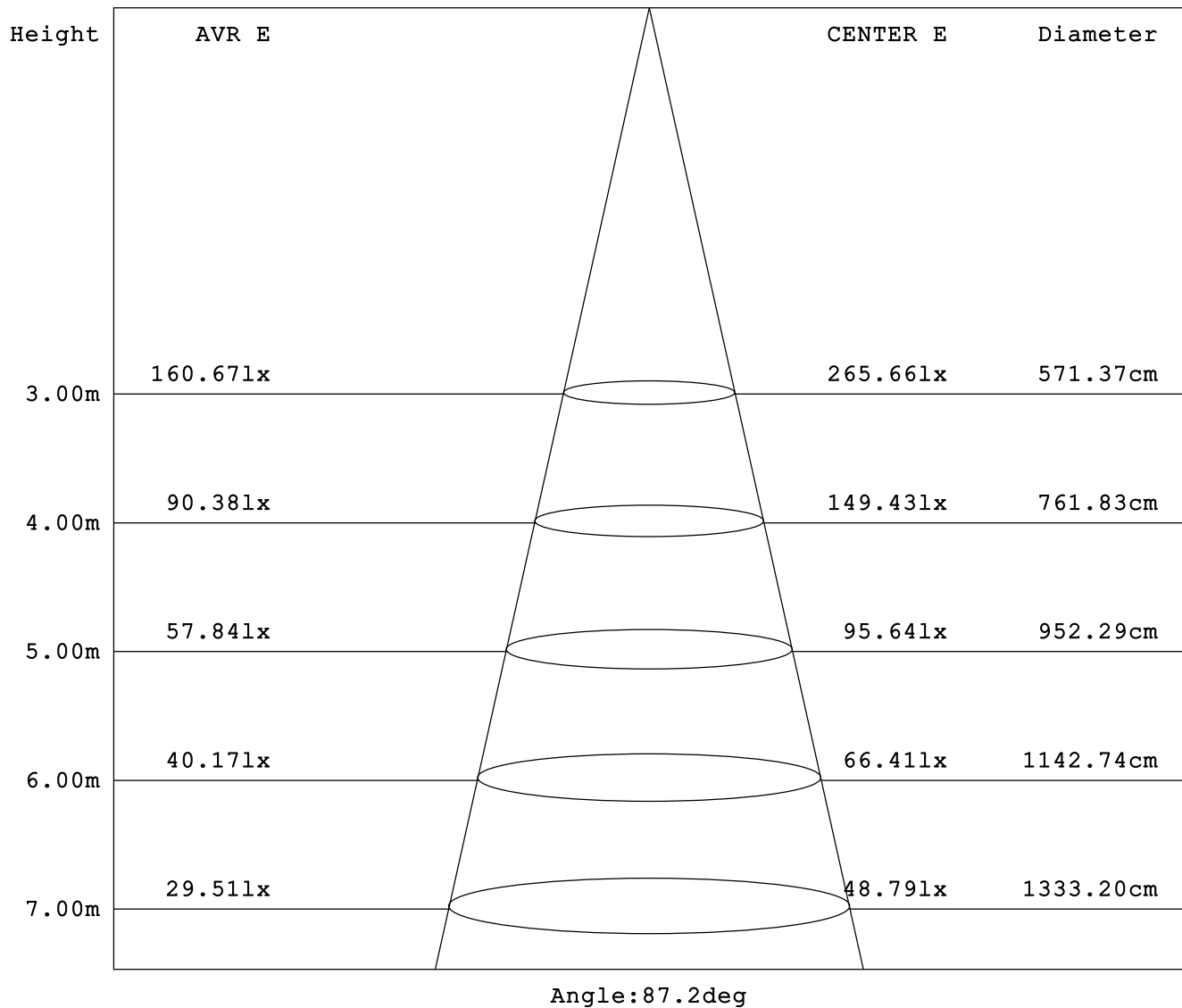
Test System:
 Temperature: 25.3DEG
 Operators:
 Test Date: 2025.07.01

Test Set: 5.0deg/s C-Gamma (TYPE C)
 Humidity: 65.0%
 Test Distance: 10.000 m
 Remarks:

AVERAGE AND CENTER E Figure

Report number:

MANUFACTURER: ILUMEN GMBH	Address:	
NAME: Agnes D	TYPE: IL-PO29D-N0652C-T3B	WEIGHT:
SPECIFICATION: 5050LED、4000K、145*53DEG	DIMENSION:	SERIAL No.:



Test System:
Temperature: 25.3DEG
Operators:
Test Date: 2025.07.01

Test Set: 5.0deg/s C-Gamma (TYPE C)
Humidity: 65.0%
Test Distance: 10.000 m
Remarks:

ZONAL FLUX DIAGRAM

Report number:

MANUFACTURER: ILUMEN GMBH	Address:	
NAME: Agnes D	TYPE: IL-PO29D-N0652C-T3B	WEIGHT:
SPECIFICATION: 5050LED、4000K、145*53DEG	DIMENSION:	SERIAL No.:

γ	C0	C45	C90	C135	C180	C225	C270	C315	γ	zone	total
5.0	2340	2579	2665	2549	2320	2098	1980	2099	0- 5	55.67	55.67
10.0	2364	2810	2928	2738	2314	1853	1703	1906	5- 10	166.5	222.1
15.0	2406	3033	3150	2935	2308	1621	1411	1697	10- 15	275.5	497.7
20.0	2450	3243	3379	3130	2304	1385	1150	1486	15- 20	381.8	879.5
25.0	2493	3506	3684	3366	2306	1173	971.3	1276	20- 25	489.0	1369
30.0	2541	3773	3911	3620	2303	1027	941.9	1090	25- 30	602.6	1971
35.0	2585	3963	3900	3801	2282	984.3	931.5	975.4	30- 35	715.2	2687
40.0	2610	4023	3586	3885	2230	1025	900.9	969.7	35- 40	809.6	3496
45.0	2594	3935	3029	3847	2159	1039	782.2	1009	40- 45	870.7	4367
50.0	2574	3674	2342	3618	2080	1002	672.8	996.1	45- 50	889.5	5257
55.0	2543	3218	1486	3199	2110	872.3	585.0	949.9	50- 55	862.9	6120
60.0	2668	2634	896.0	2774	2080	628.1	505.0	715.7	55- 60	804.6	6924
65.0	2851	1897	522.6	2311	1642	445.0	417.5	496.8	60- 65	744.6	7669
70.0	2659	940.9	292.5	1576	792.7	311.3	311.2	343.0	65- 70	671.9	8341
75.0	1432	360.4	119.8	524.0	143.7	172.5	200.8	186.5	70- 75	508.8	8850
80.0	516.5	150.6	57.21	122.5	54.17	67.23	102.9	84.14	75- 80	226.4	9076
85.0	82.23	56.66	17.37	41.41	17.22	15.16	32.80	24.08	80- 85	56.01	9132
90.0	30.65	14.28	4.589	11.52	14.26	6.459	8.982	7.871	85- 90	11.68	9144
95.0									90- 95		
100.0									95-100		
105.0									100-105		
110.0									105-110		
115.0									110-115		
120.0									115-120		
125.0									120-125		
130.0									125-130		
135.0									130-135		
140.0									135-140		
145.0									140-145		
150.0									145-150		
155.0									150-155		
160.0									155-160		
165.0									160-165		
170.0									165-170		
175.0									170-175		
180.0									175-180		
DEG	LUMINOUS INTENSITY:cd									UNIT:lm	

Test System:
Temperature:25.3DEG
Operators:
Test Date:2025.07.01

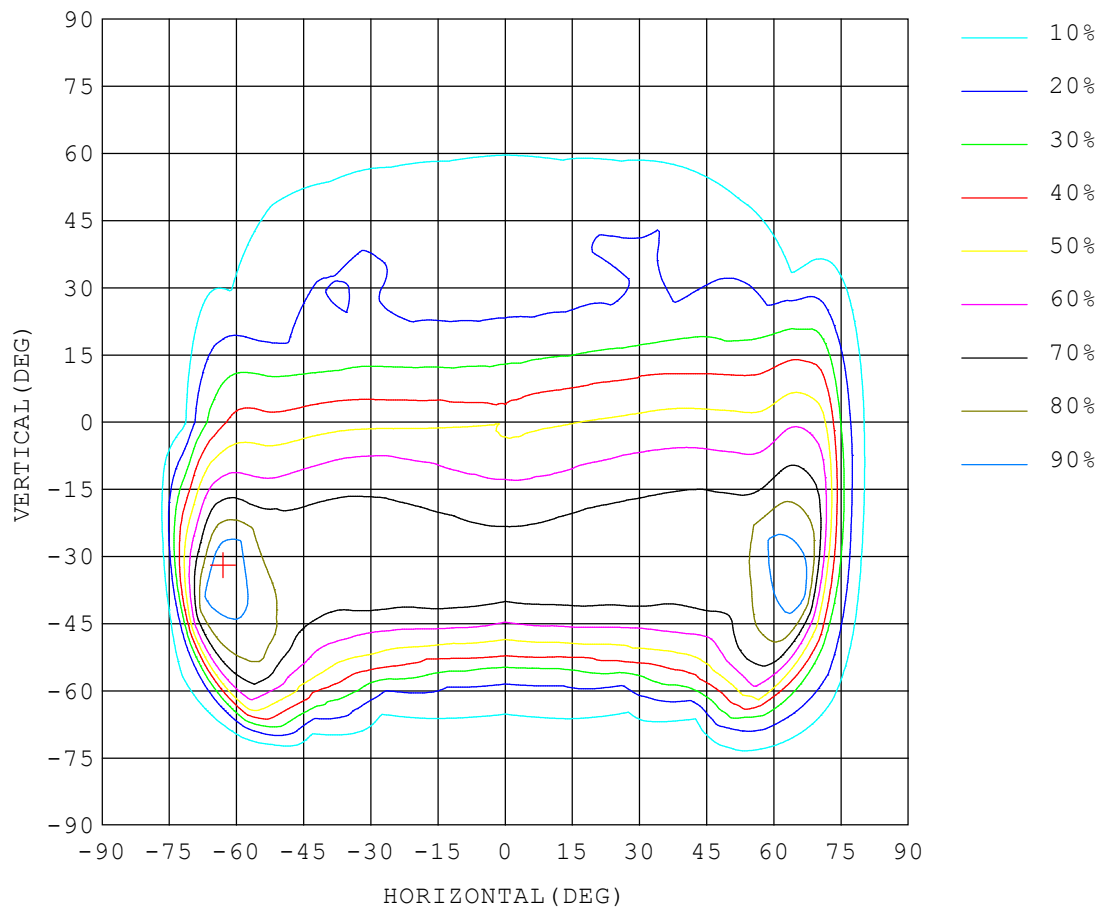
Test Set: 5.0deg/s C-Gamma (TYPE C)
Humidity:65.0%
Test Distance:10.000 m
Remarks:

ISOCANDELA DIAGRAM

Report number:

MANUFACTURER: ILUMEN GMBH	Address:	
NAME: Agnes D	TYPE: IL-PO29D-N0652C-T3B	WEIGHT:
SPECIFICATION: 5050LED、4000K、145*53DEG	DIMENSION:	SERIAL No.:

UNIT: cd



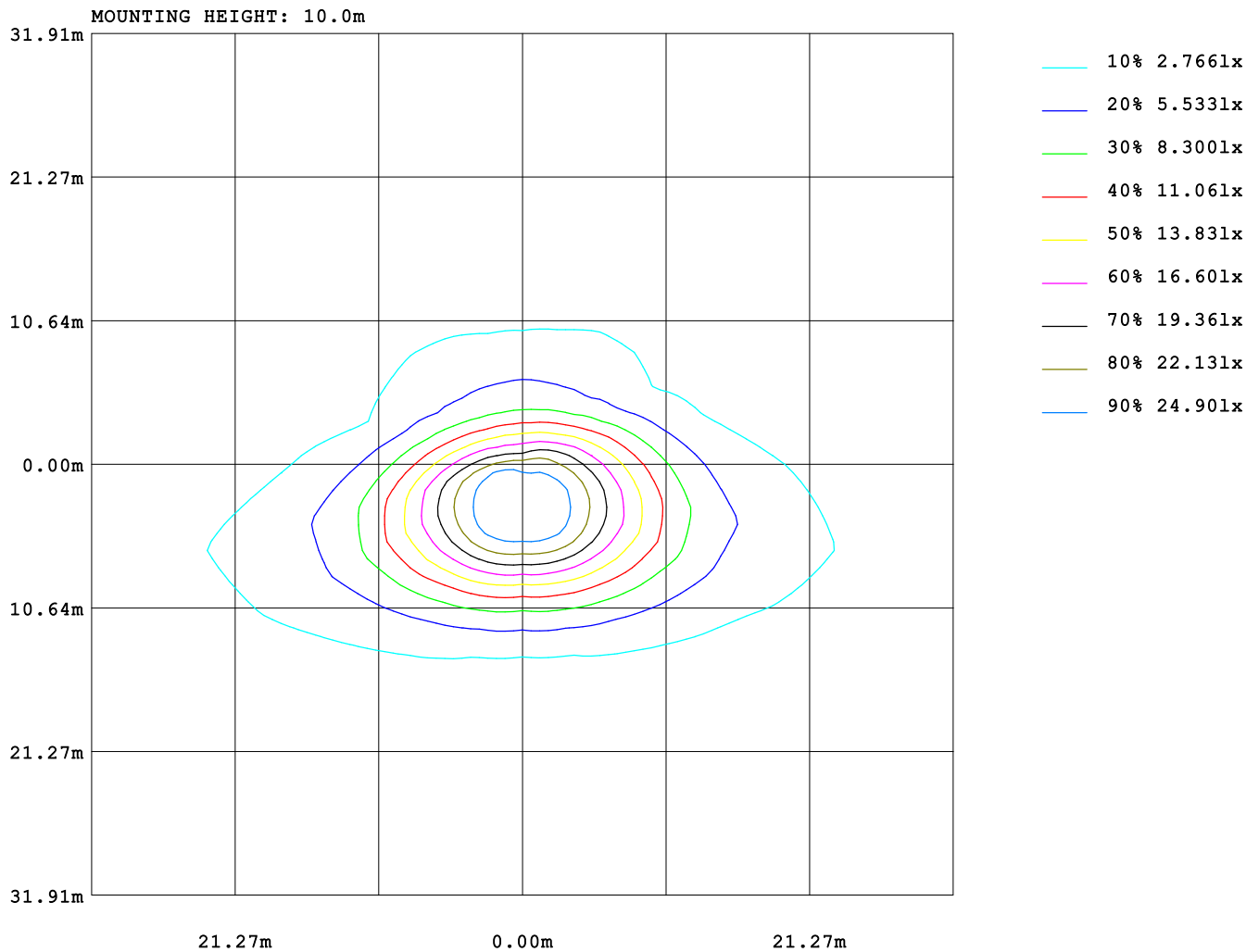
Test System:
Temperature: 25.3 DEG
Operators:
Test Date: 2025.07.01

Test Set: 5.0 deg/s C-Gamma (TYPE C)
Humidity: 65.0%
Test Distance: 10.000 m
Remarks:

ISOLUX DIAGRAM

Report number:

MANUFACTURER: ILUMEN GMBH	Address:	
NAME: Agnes D	TYPE: IL-PO29D-N0652C-T3B	WEIGHT:
SPECIFICATION: 5050LED、4000K、145*53DEG	DIMENSION:	SERIAL No.:



Test System:
Temperature: 25.3DEG
Operators:
Test Date: 2025.07.01

Test Set: 5.0deg/s C-Gamma (TYPE C)
Humidity: 65.0%
Test Distance: 10.000 m
Remarks:

LUMINOUS DISTRIBUTION INTENSITY DATA

Report number:

MANUFACTURER: ILUMEN GMBH	Address:	
NAME: Agnes D	TYPE: IL-PO29D-N0652C-T3B	WEIGHT:
SPECIFICATION: 5050LED、4000K、145*53DEG	DIMENSION:	SERIAL No.:

UNIT: cd

C (DEG) γ (DEG)	0	15	30	45	60	75	90	105	120	135	150	165	180	195	210
0.0	2328	2328	2328	2328	2328	2328	2328	2328	2328	2328	2328	2328	2328	2328	2328
5.0	2340	2427	2507	2579	2627	2662	2665	2652	2605	2549	2474	2397	2320	2228	2139
10.0	2364	2541	2694	2810	2880	2932	2928	2908	2832	2738	2613	2477	2314	2121	1953
15.0	2406	2669	2863	3033	3120	3168	3150	3133	3046	2935	2756	2561	2308	2051	1803
20.0	2450	2795	3060	3243	3332	3400	3379	3357	3254	3130	2926	2655	2304	1937	1625
25.0	2493	2920	3253	3506	3650	3720	3684	3670	3566	3366	3108	2759	2306	1828	1443
30.0	2541	3068	3445	3773	3966	4011	3911	3957	3857	3620	3291	2885	2303	1719	1264
35.0	2585	3206	3637	3963	4094	4051	3900	4029	3981	3801	3468	2997	2282	1590	1110
40.0	2610	3338	3842	4023	3939	3796	3586	3795	3862	3885	3640	3071	2230	1426	1023
45.0	2594	3455	3977	3935	3595	3283	3029	3303	3527	3847	3762	3129	2159	1231	997
50.0	2574	3554	3986	3674	3071	2620	2342	2621	3030	3618	3803	3196	2080	1023	1010
55.0	2543	3700	3908	3218	2345	1672	1486	1675	2418	3199	3784	3331	2110	815	940
60.0	2668	4149	3644	2634	1458	1016	896	1024	1679	2774	3769	3816	2080	644	749
65.0	2851	4748	3608	1897	809	602	523	592	827	2311	3861	4542	1642	498	535
70.0	2659	4900	3467	941	417	363	293	369	413	1576	3790	4497	793	339	391
75.0	1432	2908	2557	360	166	152	120	150	163	524	2911	3175	144	138	221
80.0	517	1038	762	151	80.6	74.0	57.2	70.2	68.4	123	467	502	54.1	45.4	69.5
85.0	82.2	119	78.6	56.6	26.5	30.2	17.3	27.8	20.0	41.4	42.0	70.8	17.2	10.9	21.3
90.0	30.6	31.7	13.9	14.2	5.68	9.78	4.58	9.54	4.56	11.5	5.46	16.1	14.2	10.1	13.0

Test System:
Temperature:25.3DEG
Operators:
Test Date:2025.07.01

Test Set: 5.0deg/s C-Gamma (TYPE C)
Humidity:65.0%
Test Distance:10.000 m
Remarks:

LUMINOUS DISTRIBUTION INTENSITY DATA

Report number:

MANUFACTURER: ILUMEN GMBH	Address:	
NAME: Agnes D	TYPE: IL-PO29D-N0652C-T3B	WEIGHT:
SPECIFICATION: 5050LED、4000K、145*53DEG	DIMENSION:	SERIAL No.:

UNIT: cd

C (DEG) γ (DEG)	225	240	255	270	285	300	315	330	345
0.0	2328	2328	2328	2328	2328	2328	2328	2328	2328
5.0	2098	2014	2020	1980	2030	2038	2099	2177	2263
10.0	1853	1764	1706	1703	1724	1775	1906	2030	2212
15.0	1621	1499	1421	1411	1448	1552	1697	1881	2152
20.0	1385	1238	1161	1150	1186	1304	1486	1728	2084
25.0	1173	1037	979	971	989	1083	1276	1608	2015
30.0	1027	952	941	942	934	952	1090	1453	1948
35.0	984	957	937	932	935	951	975	1274	1895
40.0	1025	981	920	901	938	981	970	1098	1779
45.0	1039	964	815	782	863	1002	1009	953	1640
50.0	1002	821	688	673	711	923	996	871	1465
55.0	872	668	593	585	603	727	950	817	1273
60.0	628	522	504	505	499	549	716	713	1052
65.0	445	426	412	418	409	429	497	535	755
70.0	311	320	308	311	309	313	343	361	365
75.0	173	201	180	201	186	201	187	204	171
80.0	67.2	92.0	86.4	103	89.0	100	84.1	89.9	61.0
85.0	15.1	27.2	21.7	32.8	24.7	34.0	24.0	28.8	16.9
90.0	6.45	9.40	4.54	8.98	4.57	10.4	7.87	13.7	8.76

Test System:
 Temperature: 25.3DEG
 Operators:
 Test Date: 2025.07.01

Test Set: 5.0deg/s C-Gamma (TYPE C)
 Humidity: 65.0%
 Test Distance: 10.000 m
 Remarks: